

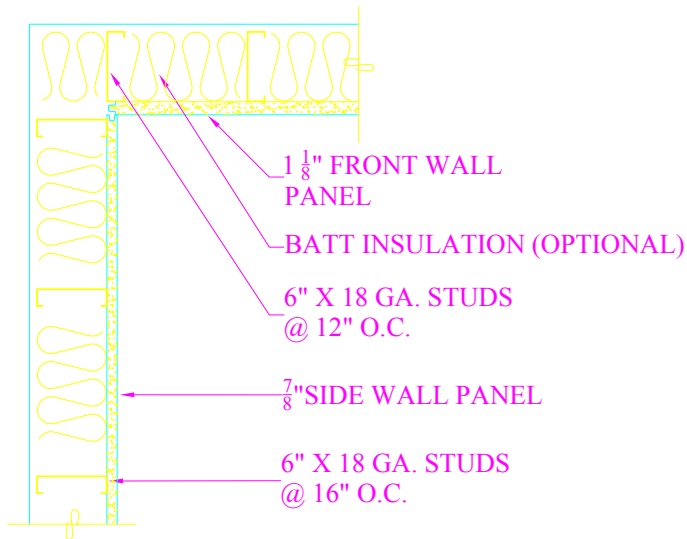
16GA. 6" METAL JOIST  
@ 16" O.C., TYP.

TRIM HEAD TEK SCREWS.  
6 PER PANEL EDGE, MIN.

APPLY CONTINUOUS  
ADHESIVE BETWEEN  
PANEL AND JOIST.

5/8" CEILING PANEL

## PANEL @ CEILING



1 1/8" FRONT WALL  
PANEL

BATT INSULATION (OPTIONAL)

6" X 18 GA. STUDS  
@ 12" O.C.

7/8" SIDE WALL PANEL

6" X 18 GA. STUDS  
@ 16" O.C.

## FRONT WALL SIDE WALL CONNECTION

Z:\ 17 19	REV:
	SALES:
	DRAWN BY: JH
	CHECKED BY:
	DATE: 2/24/14    SCALE: 1:8

PROJECT:  
Standard Racquetball Court  
Panel @ Ceiling  
Front Wall/Side Wall Connections



**CLASSIC  
WOODWORKING**  
8160 SW JACKTOWN ROAD  
BEAVERTON, OR 97007  
(503) 692-0800  
FAX # (503) 692-7070