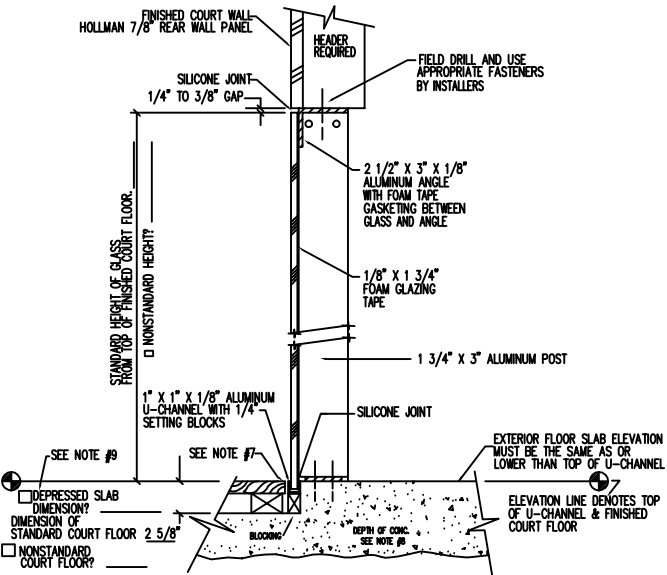


**GENERAL NOTES**

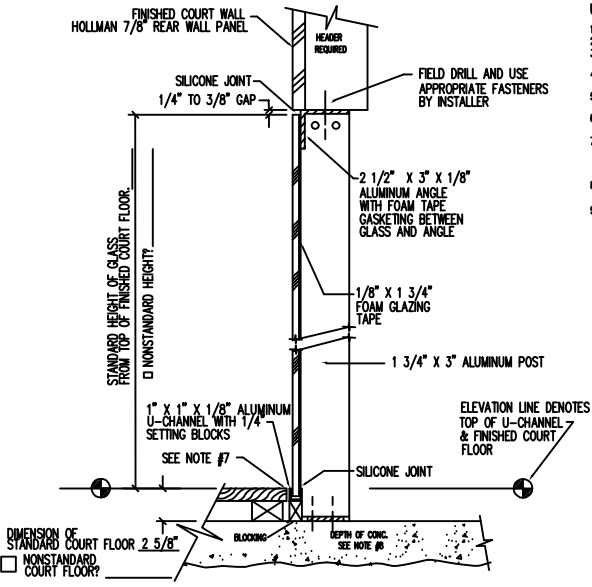
UNLESS OTHERWISE NOTED:

1. ALL GLASS IS 1/2" CLEAR TEMPERED.
2. PLAY LINES ARE 1/8" WIDE, 1" ON CENTER AND 30" HIGH.
3. DOORS ARE 36" WIDE BY 84" HIGH WITH RIGHT HAND SWING WHICH OPENS INTO COURT.
4. ALL FASTENERS TO ATTACH ALUMINUM ANGLE/CHANNEL TO SUBSTRATE BY INSTALLER.
5. ALL GLASS CONNECTION FITTINGS ARE BLACK HIGH TENSILE POLYURETHANE.
6. ALTERNATE GLASS WALLS MEET AND/OR EXCEED THE BOCA REQUIREMENTS.
7. DIFFERENT TYPES OF COURT AND FLOOR SYSTEMS MAY REQUIRE EXPANSION SPACING BETWEEN GLASS WALL/U-CHANNEL AND COURT OR FLOOR SYSTEM. CHECK WITH COURT AND FLOORING MANUFACTURERS.
8. CONCRETE DEPTH UNDER GLASS WALLS & POSTS MUST BE MINIMUM 4" AND CLEAR OF ALL REINFORCING ROD.
9. TYPICALLY FLOOR SLAB DEPRESSION IS SAME DIMENSION AS FINISHED COURT FLOOR.



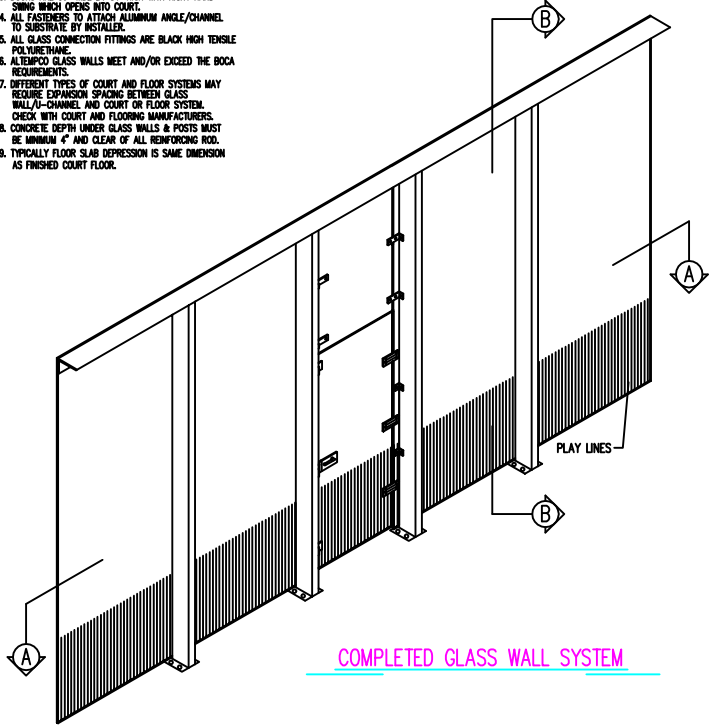
**ALTERNATE SECTION "B"**

RECESSED SLAB (ALTERNATE FLOOR/POST RELATIONSHIP)

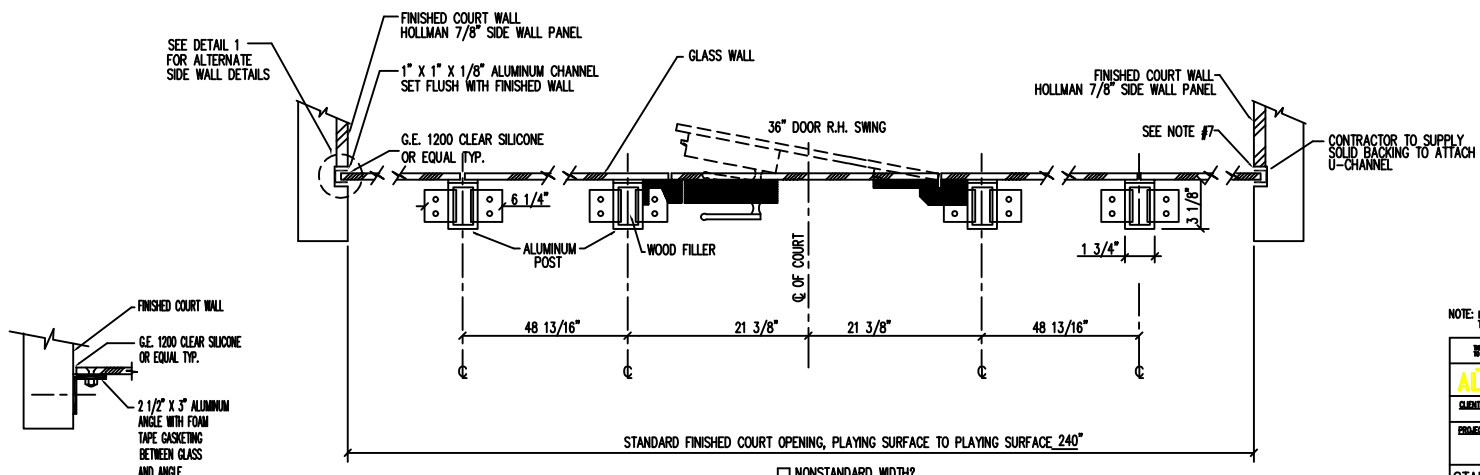


**STANDARD SECTION "B"**

FLAT SLAB (STANDARD FLOOR/POST RELATIONSHIP)



**COMPLETED GLASS WALL SYSTEM**



**SECTION "A"**

DETAIL 1 ALTERNATE SIDE WALL DETAIL

CHECK BOX IF DIMENSIONS OR ALTERNATES ARE NOT STANDARD.

NOTE: IT IS THE CLIENT'S RESPONSIBILITY TO INSURE THE DRAWING'S ACCURACY AND COMPLETENESS.

PROJECT: <b>AUTEMP CO</b>	
STANDARD 20' x 10' GLASS POST WALL	
36" DOOR	
REVISIONS:	DATE:
APPROVED BY:	DATE:
CHECKED BY:	DATE:
DRAWN BY:	DATE: