

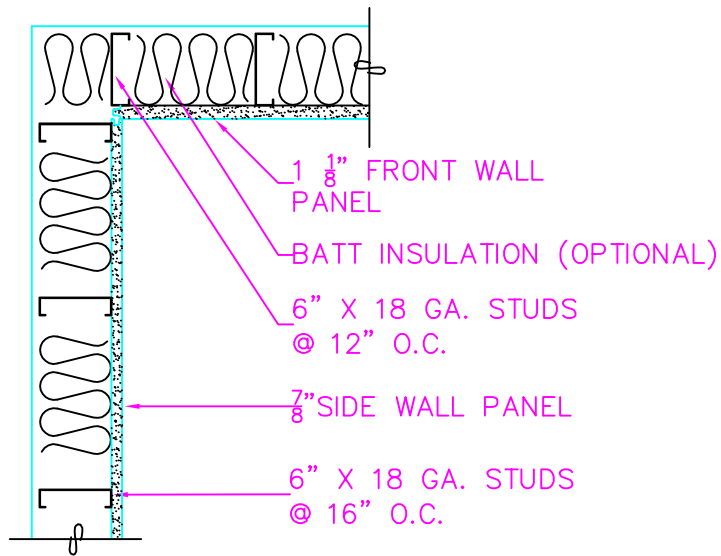
16GA. 6" METAL JOIST
@ 16" O.C., TYP.

TRIM HEAD TEK SCREWS.
6 PER PANEL EDGE, MIN.

APPLY CONTINOUS
ADHESIVE BETWEEN
PANEL AND JOIST.

5/8" CEILING PANEL

PANEL @
CEILING



1 1/8" FRONT WALL
PANEL

BATT INSULATION (OPTIONAL)

6" X 18 GA. STUDS
@ 12" O.C.

7/8" SIDE WALL PANEL

6" X 18 GA. STUDS
@ 16" O.C.

FRONT WALL
SIDE WALL CONNECTION

15 17	REV:
	SALES: JRH
	DRAWN BY: JRH
	CHECKED BY:
	DATE: 7/25/16 SCALE: 1:8

PROJECT:
Standard Racquetball Court
Panel @ Ceiling
Front Wall/Side Wall Connections



**CLASSIC
WOODWORKING**
PO Box 127
North Plains, OR 97133
(503) 692-0800
FAX # (503) 692-7070