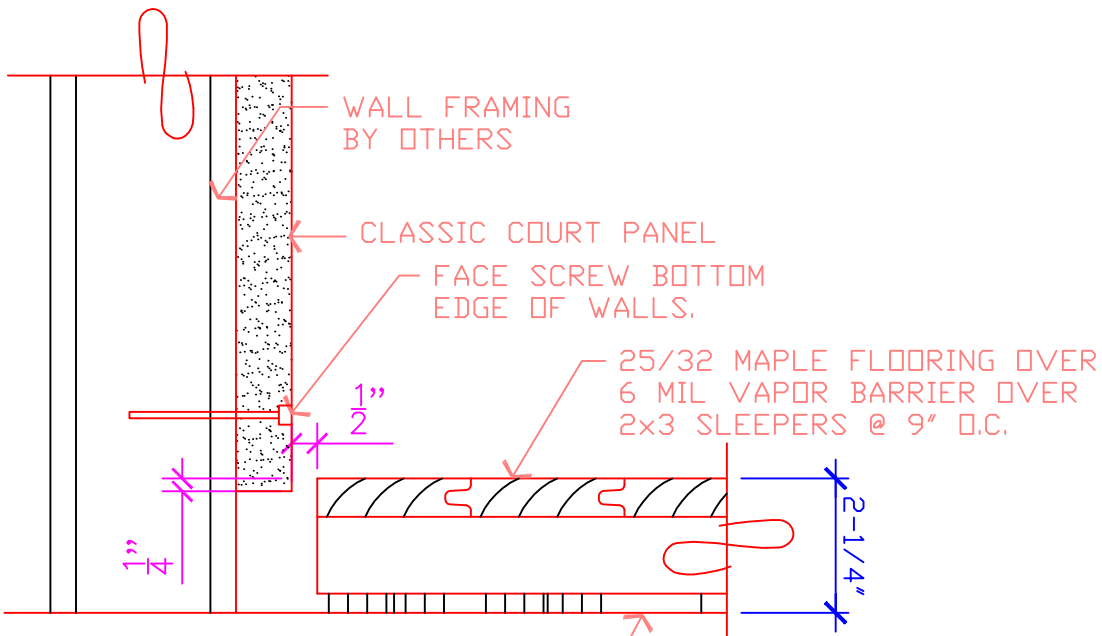


DOOR/FLOOR
SILL



CONC. FLOOR OR SUBFLOOR MUST
BE STRAIGHT AND LEVEL.
MAXIMUM DEVIATION:
1/8" PER 10'-0" RADIUS.

FLOOR/WALL
CONNECTION

16 17	REV:
	SALES: JRH
	DRAWN BY: JRH
	CHECKED BY:
	DATE: 7/25/16 SCALE: 1:8

PROJECT:
Standard Racquetball Court
Door/Floor Sill
Floor to Wall Connection



**CLASSIC
WOODWORKING**
PO Box 127
North Plains, OR 97133
(503) 692-0800
FAX # (503) 692-7070