

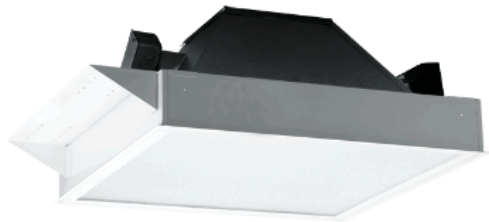
Racquetball Court Lighting



HE Williams 2'x4' Static Troffer - 50 Series

Fluorescent Light Fixture

- Standard 10 count per racquetball court installation.
- Fully-enclosed spring-loaded cam latches allow years of hassle-free maintenance.
- T-slot steel hinge ensures positive retention when door is opened.
- Meets many energy rebate requirements with the high efficiency HIEF option.
- 4-3/8" deep housing eliminates lens shadowing.
- Deep reinforcement ribs provide added strength.
- Rolled-edge channel adds superior strength.
- Optional anti-microbial powder coating available to prevent the spread of dangerous micro-organisms and suppress the growth of mold and bacteria.
- Integral T-bar clips quickly secure fixture to structure.
- Field convertible to NEMA Type "F".
- Fully gasketed door minimizes contaminants.
- All parts painted after fabrication to facilitate installation, increase efficiency, and inhibit corrosion.
- This fixture is proudly made in the USA.



Esco 2'x2' Recessed Square - R1700 Series

Metal Halide Light Fixture

- Standard 6 count per racquetball court installation.
- 20 gauge (.036") cold rolled steel (C.R.S.) die formed and welded construction.
- Aluminum .032" fabricated into one piece construction finished high gloss white 90% reflectance polyester powder coating.
- C73 prismatic tempered glass lens.
- Automatic resetting heat sensitive device for non-IC installations. Protects fixture from overheating if insulation covers fixture.
- Clear, metal halide, mogul base (by others).
- Hi-heat porcelain, 4 K.V. rated, w/nickel plated copper screw shell, spring loaded center contact, lamp grips, SF-2 leads (200° C). Impregnated gasket.
- All painted parts are washed in alkaline solution, rinsed in an iron phosphate, baked dry, then painted with a TGIC polyester powder coating electrostatic applied and baked.
- ETL, CETL listed, suitable for wet location under covered ceiling. I.B.E.W. labeled.
- This fixture is proudly made in the USA.